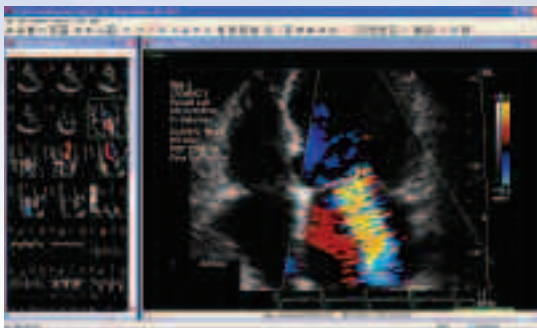


## Completing the Echo Lab: From Preset Measurement Routines to Wall Motion Scoring Intelligence

*ProSolv® CardioVascular has everything you need to successfully complete any Echo exam. For starters, we offer a unique, highly sophisticated engineering software package that solves even the most complicated calculations. It includes hundreds of possible measurements and calculations that you can modify, expand or group together to identically match your reports. And our other reporting capabilities are unmatched in the industry.*



### Scoring made simple.

ProSolv® CardioVascular offers an innovative feature called wall motion scoring intelligence. Compatible with resting, 2, 3 and 4 stage stress echo exams, it allows you to generate a diagnostic statement based on wall motion scoring performed by a clinician. If the clinician accepts the clinical statements, they can be included in your report and edited as necessary. You can choose to display your findings by using either anatomic or bulls-eye schematics – whichever is easiest to reference – and embed them into your final report.

### With ProSolv®, measurements are no farther than a click away.

Our measurement transfer tool lets you transfer all measurements and calculations taken from any ultrasound system directly into your database so they can auto-populate your clinical report. This error-proof feature eliminates the need to re-enter measurements taken during acquisition. Plus, more than 400 ASE approved default cardiac measurements and calculations are available to use for off-line analysis. And if a measurement is performed off-line, you can access the image where it was made quickly and easily by a simple right mouse click.

ProSolv® CardioVascular also features one-click normal report creation. With one mouse click, you can create an entire clinical report either based on ASE guidelines, or on customer-specific parameters. Even in a slightly abnormal report, this allows you to 'report by exception' – in other words, create a normal report, then quickly change one or two items that are outside of the normal range.

ProSolv® includes several preset measurement routines for 2D, Doppler and M-Mode. And user-defined measurements and calculations can be directly added to your database. To sum it up, ProSolv® CardioVascular saves you loads of time while minimizing errors.

## Reports, the way you want them.

Our default reports are based on guidelines from the American Society of Echocardiography (ASE) and the Intersocietal Commission for the Accreditation of Echocardiography Labs (ICAEL). Each pre-configured template features reporting profiles as well as clinical statements, measurements and calculations. Plus you can add your own comments for site-specific protocols and reporting requirements, embed images and configure your own defined macros for more efficient reporting. Choose from a comprehensive list of fully customizable reports:

- Adult Transthoracic Echo
- Treadmill Stress Echo
- Dobutamine Stress Echo
- Transesophageal Echo

To discover just how easily ProSolv® CardioVascular can help you complete your Echo lab, contact your ProSolv® CardioVascular Sales Specialist today. Or call 1-800-755-2150 ext. 2.

